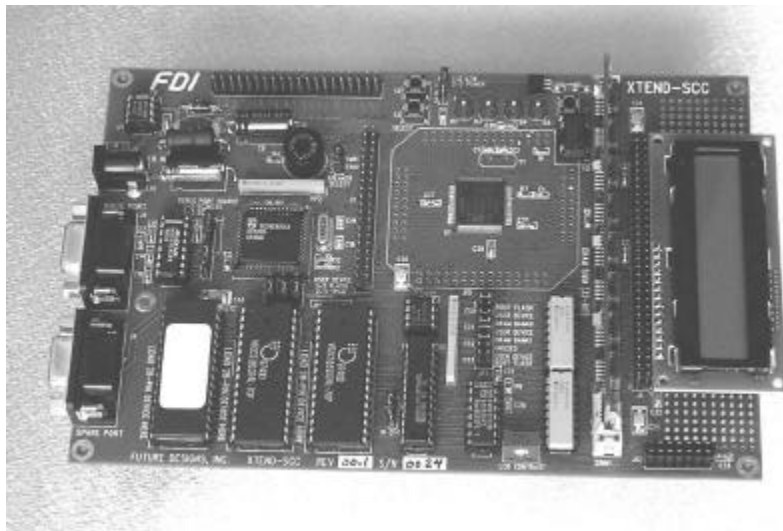


XTEND-SCC *Development Kit*



XTEND

XA
Trainer &
Expandable
Narrative
Design

The *XTEND*, XA Trainer and Expandable Narrative Design, is designed to provide the user with a stable hardware and software platform for application development with the XA-SCC. In many cases the *XTEND* may serve as a quick prototype for the actual user application. With the on-board prototype area or optional communications modules, the user can quickly and easily get a new customized design running with the XA-SCC.

Highlights

- Quick Start kit for any XA-SCC Design
- Why “re-invent” when you can just “re-use”
- Less than 20 minutes to
 - ◆ Load the software
 - ◆ Setup the board
 - ◆ Start designing
- Kit includes everything you need
 - ◆ XA-SCC Board
 - ◆ Software
 - ◆ Documentation
 - ◆ Schematics
 - ◆ Power Supply
 - ◆ Serial Cable
- Optional Physical Interface Modules

Specifications

- Philips XA-SCC Microcontroller utilizing 100-pin LQFP package
- 64KB Standard FLASH ROM Code Space, expandable to 1MB
- Code Space supports EPROM, FLASH (5V), NVSRAM, or SRAM
- 4MB EDO SIMM in 72-pin DRAM SIMM Socket (supports 1MB to 16MB of EDO or FPM DRAM)
- Optional High-Speed Data Space SRAM, expandable to 512KB
- Interface for character type LCD modules with 16 character LCD included
- 60-pin Expansion Header for Full Expansion Capability (16MB memory and I/O support)
- 9 VDC Input with on-board 5V power supply, UL Approved Wall Supply included
- 5.0" x 7.5" 4-layer PCB with Full Silkscreen Information
- 1.25" x 4" wire-wrap area on-board
- On-board speaker for tone generation
- Users manual and schematics included
- On-board DUART provides two DB-9 RS232 Serial Communications Ports, RS232 Cable and DB25 Adapter Included
- Two user input pushbuttons
- Four user controlled LEDs
- Example Routines for Applications
 - ◆ XA-SCC Initialization Routines
 - ◆ Serial Port Drivers
 - ◆ Timer/Counter Drivers
 - ◆ Watchdog Timer Setup
 - ◆ Interrupt Routines
- Tasking XA Toolchain Demo for Windows
 - ◆ Tasking Embedded Development Environment
 - ◆ XA C-Compiler Demo
 - ◆ Crossview Debugger Demo with ROM Monitor pre-programmed
- CMX RTOS Information Package
- Philips XA Assembler, Simulator and 8051 to XA Translator
- Optional Physical Interface Modules Include:
 - ◆ Multiprotocol Serial Module (MSM)
 - ◆ Simple Serial Module (SSM) for RS232

Ordering Information

Part Number: XTEND-SCC
Price: \$449.00 (USD)
Warranty: 30-day money back guarantee
Availability: Stock
Philips 12NC: TBD

(256) 830-4116 Information
(800) 278-0293 Sales
(256) 830-9421 FAX
e-mail sales@teamfdi.com
www.teamfdi.com

Future Designs, Inc.
P.O. Box 7362
Huntsville, AL 35807



Kit Contents