



# ***TASKING License Management***

Copyright © 2022 TASKING BV.

All rights reserved. You are permitted to print this document provided that (1) the use of such is for personal use only and will not be copied or posted on any network computer or broadcast in any media, and (2) no modifications of the document is made. Unauthorized duplication, in whole or part, of this document by any means, mechanical or electronic, including translation into another language, except for brief excerpts in published reviews, is prohibited without the express written permission of TASKING BV. Unauthorized duplication of this work may also be prohibited by local statute. Violators may be subject to both criminal and civil penalties, including fines and/or imprisonment. TASKING® and its logo are registered trademarks of TASKING Germany GmbH. All other registered or unregistered trademarks referenced herein are the property of their respective owners and no trademark rights to the same are claimed.

# Table of Contents

Manual Purpose and Structure .....	v
1. Licensing Overview .....	1
1.1. Licensing Terminology .....	1
1.2. License Types .....	2
2. Licensing TASKING Products .....	5
2.1. Obtaining a License .....	5
2.2. Frequently Asked Questions (FAQ) .....	6
2.3. Installing a License .....	6
2.3.1. Configure the Firewall in your Network .....	7
2.3.2. Installing Server Based Licenses (Floating or Node-Locked) .....	7
2.3.3. Installing Client Based Licenses (Node-Locked) .....	8
2.4. License Files Created During Installation .....	11
2.4.1. Licensing Options File .....	11
2.4.2. License File .....	14
3. Local License Server .....	15
3.1. Overview .....	15
3.2. Installing a Local License Server .....	17
3.2.1. Start the Local License Server as a Service .....	18
3.2.2. Start the Local License Server from the Command Line .....	20
3.2.3. Obtaining a License for a Local License Server .....	20
3.3. Local License Server Options and Defines .....	21
3.4. Redundant Master - Slave Configuration .....	23
3.5. Creating a Local License Server License File .....	24
4. Administering Licenses .....	27
4.1. Monitoring the Status of the Local License Server .....	27
4.2. Transferring a License (Borrow Feature) .....	29
4.3. Joining Licenses .....	31
4.4. Bulk Installation .....	31
4.5. Restricting Access to Licenses .....	32



# Manual Purpose and Structure

## Manual Purpose

You should read this manual if you:

- install a licensed TASKING product and need more information about licensing and installation than what is described in the Getting Started manual of the TASKING product
- are upgrading or otherwise modifying existing licenses
- install a TASKING local license server on a network

## Manual Structure

### **Chapter 1, *Licensing Overview***

Contains an overview of the terminology used in this manual and describes the different license types.

### **Chapter 2, *Licensing TASKING Products***

Explains step-by-step how to obtain and install a license for a TASKING product. Also contains a list of options and environment variables that a TASKING product uses to check for a license. Furthermore it explains the use of a license file.

### **Chapter 3, *Local License Server***

Explains how to install and configure a local license server.

### **Chapter 4, *Administering Licenses***

Explains how to monitor the status of the local license server. Also explains how to borrow, join or bulk install licenses and control access to licenses.

## Related Publications

For details about installing a TASKING product, see the Getting Started manual delivered with the product.



# Chapter 1. Licensing Overview

## 1.1. Licensing Terminology

TASKING products are protected with TASKING license management software. To use a TASKING product, you must install that product and install a license.

The following terminology is used to describe the licensing concepts and software components (in alphabetical order).

### Access file

An access file is a file used by a local license server with rules to deny, permit, block and bind users and systems to licenses.

### Client

A client is a TASKING product for which a license is needed. For example, a C compiler.

### Computer ID

The computer ID is an alphanumeric value that uniquely identifies your computer. The Computer ID is required to identify the computer for a node-locked license.

### License

A license is the right to use a product. During the execution of a TASKING product (client), the client verifies whether you have the right to use it. Therefore, the client sends the license key to the license server. If you are allowed to use the client the license server sends a license back to the client. If you use a node-locked client based license the license is not retrieved from a license server but is read from a license file stored on your computer.

### License key

The license key is a unique key (in the format xxxx-xxxx-xxxx-xxxx) provided to you by TASKING. The license key is associated with the product you ordered, it identifies that you have the right to use the product. During the installation of your product you need to enter this key.

### License server

A license server is the process that handles the license requests from client processes. A license server can be a remote license server on the internet or a local license server on your company network.

In this manual "TASKING Local License Server" and "Local License Server" are used as synonyms. "Remote License Server" is used as a synonym for "TASKING Remote License Server".

### **Linger time**

The linger time is a period in which the license server recognizes the license as being in-use after the user exits the software and the license is no longer running. During that period another user cannot use the license. After the linger time has finished, the license will be returned to the license server.

In build systems or larger builds that employ multiple files to be compiled and linked, the build time is such that it may happen that another client attempts to use a license. As the tools (compiler, assembler) are individually called per file to compile and assemble, a different user may 'grab' a license in between calls and the build would terminate abnormally. To avoid this, especially if the number of available licenses is exhausted, the linger time was introduced.

### **Security ID**

The security ID is an alphanumeric value that uniquely identifies the computer that runs a local license server.

## **1.2. License Types**

The following license types can be ordered from TASKING.

### **Node-locked license**

A node-locked license locks the software to one specific computer so you can use the product on that particular computer only.

For information about installing a node-locked license see [Section 2.3.2, \*Installing Server Based Licenses \(Floating or Node-Locked\)\*](#) and [Section 2.3.3, \*Installing Client Based Licenses \(Node-Locked\)\*](#).

### **Floating license**

A floating license is a license located on a license server and can be used by multiple users on the network. Floating licenses allow you to share licenses among a group of users up to the number of users (seats) specified in the license.

For example, suppose 50 developers may use a client but only ten clients are running at any given time. In this scenario, you only require a ten seats floating license. When all ten licenses are in use, no other client instance can be used. Also a linger time is in place. This means that a license seat is locked for a period of time after a user has stopped using a client. The license seat is available again for other users when the linger time has finished.

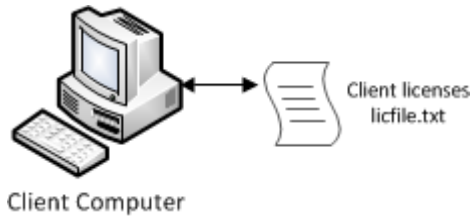
For information about installing a floating license see [Section 2.3.2, \*Installing Server Based Licenses \(Floating or Node-Locked\)\*](#).



## License service types

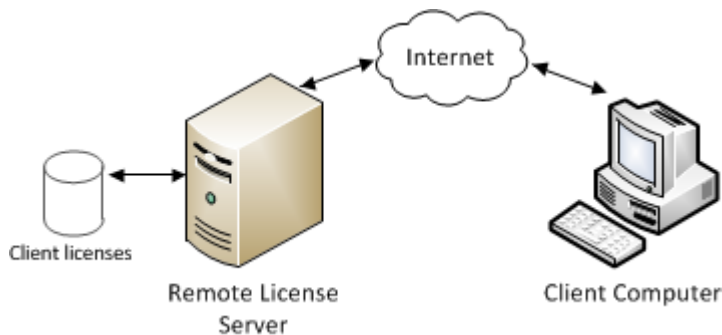
The license service type specifies the process used to validate the license. The following types are possible:

- **Client based** (also known as 'standalone'). The license is serviced by the client. All information necessary to service the license is available on the computer that executes the TASKING product. This license service type is available for node-locked licenses only.



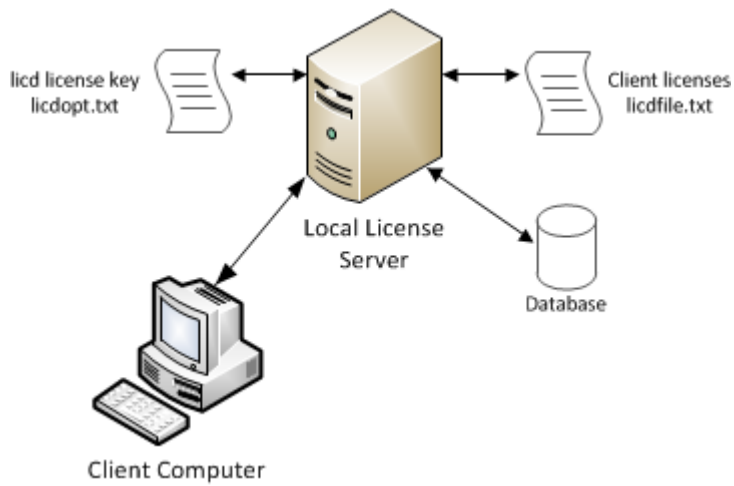
- **Server based** (also known as 'network based'). The license is serviced by a separate license server program that runs either on your companies' network or runs in the cloud. This license service type is available for both node-locked licenses and floating licenses.

Licenses can be serviced by a cloud based license server called "**Remote License Server**". This is a license server that is operated by TASKING.



Alternatively, you can install a license server program on your local network. Such a server is called a "**Local License Server**". You have to configure such a license server yourself, see [Section 3.2, Installing a Local License Server](#).

## ***TASKING License Management***



The benefit of using the Remote License Server is that product installation and configuration is simplified.

Unless you have an IT department that is proficient with the setup and configuration of licensing systems we recommend to use the facilities offered by the Remote License Server.

# Chapter 2. Licensing TASKING Products

This chapter guides you through the process of licensing a TASKING product.

## Installation advice when using a local license server

During the installation of a TASKING product you can specify to use a local license server. If you do so, the installation program asks for the server name and port number of the local license server. If you do not know this information, you can simplify the installation if you first install and run the local license server before you install the TASKING product. See [Section 3.2, \*Installing a Local License Server\*](#).

## 2.1. Obtaining a License

You need a license key when you install a TASKING product on a computer. If you have not received such a license key follow the steps below to obtain one. Otherwise, you cannot install the software.

### Obtaining a server based license (floating or node-locked)

- Order a TASKING product from TASKING or one of its distributors.

*A license key will be sent to you by email or on paper.*

If your node-locked server based license is not yet bound to a specific computer ID, the license server binds the license to the computer that first uses the license.

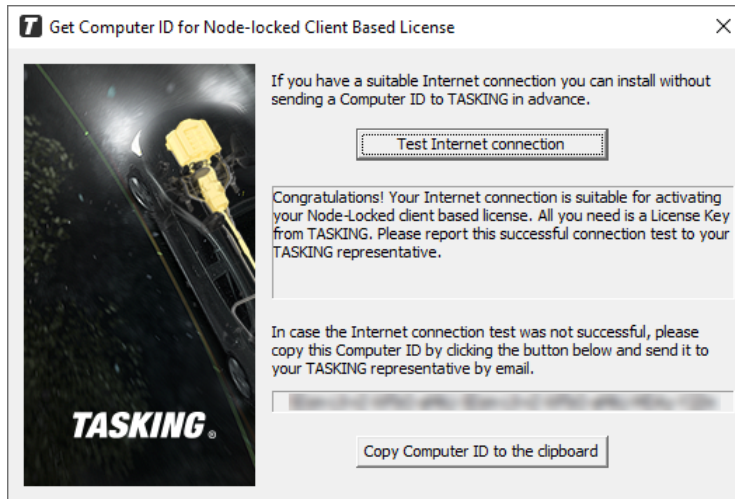
### Obtaining a client based license (node-locked)

To use a TASKING product on one particular computer with a license file, TASKING needs to know the computer ID that uniquely identifies your computer. You can do this with the **getcid** program that is available on the TASKING website. The detailed steps are explained below.

1. Download the **getcid** program from <https://www.tasking.com/support/tlm/downloads>.
2. Execute the **getcid** program on the computer on which you want to use a TASKING product. The tool has no options. For example,

Windows:

```
C:\Tasking\getcid_version
```



*The computer ID is displayed in the lower part of the dialog.*

Linux:

```
./getcid_version  
ComputerID: 5Dzm-L9+Z-WFbO-aMkU-5Dzm-L9+Z-WFbO-aMkU-MDAy-Y2Zm
```

*The computer ID is displayed on your screen.*

3. Order a TASKING product from TASKING or one of its distributors and supply the computer ID.

*A license key and a license file will be sent to you by email or on paper.*

When you have received your TASKING product, you are now ready to install it.

## 2.2. Frequently Asked Questions (FAQ)

If you have questions or encounter problems you can check the support page on the TASKING website.

<https://www.tasking.com/support/tlm/faqs>

This page contains answers to questions for the TASKING license management system TLM.

If your question is not there, please contact your nearest TASKING Sales & Support Center or Value Added Reseller.

## 2.3. Installing a License

The license setup procedure is done by the installation program.

If the installation program can access the internet then you only need the license key. Given the license key the installation program retrieves all required information from the remote license server. The install program sends the license key and the computer ID of the computer on which the installation program is running to the remote license server, no other data is transmitted.

If the installation program cannot access the internet the installation program asks you to enter the required information by hand. If you install a node-locked client based license you should have the license file at hand (see [Section 2.1, Obtaining a License](#)).

Floating licenses are always server based and node-locked licenses can be server based. All server based licenses are installed using the same procedure.

### 2.3.1. Configure the Firewall in your Network

For using the TASKING license servers the TASKING license manager tries to connect to the remote license servers `lic1.tasking.com`, `lic2.tasking.com`, `lic3.tasking.com`, `lic4.tasking.com` at the TCP ports 8080, 8936 or 80. Make sure that the firewall in your network is transparently enabled for one of these ports.

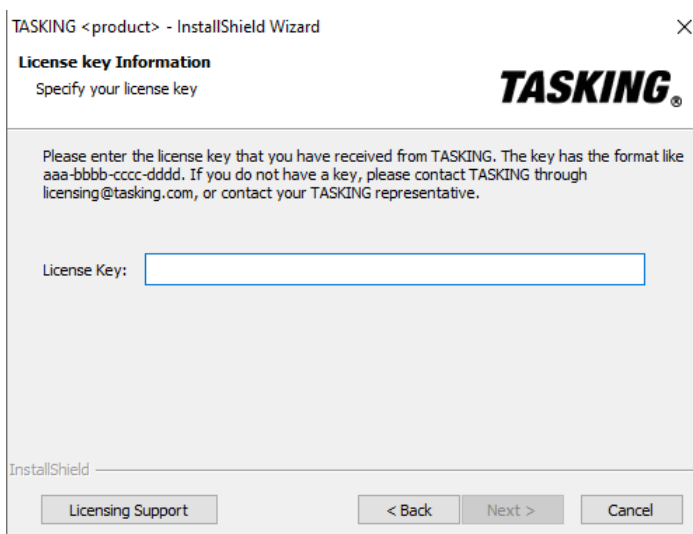
### 2.3.2. Installing Server Based Licenses (Floating or Node-Locked)

If you do not have received your license key, read [Section 2.1, Obtaining a License](#) before you continue.

#### Windows

1. If you want to use a local license server, first install and run the local license server before you continue with step 2. See [Section 3.2, Installing a Local License Server](#).
2. Install the TASKING product and follow the instructions that appear on your screen.

*The installation program asks you to enter the license information.*



The screenshot shows a Windows dialog box titled "TASKING <product> - InstallShield Wizard". The dialog box has a close button (X) in the top right corner. The main heading is "License key Information" with the instruction "Specify your license key". The TASKING logo is displayed on the right side. Below the heading, there is a text box containing the following instructions: "Please enter the license key that you have received from TASKING. The key has the format like aaa-bbbb-cccc-dddd. If you do not have a key, please contact TASKING through licensing@tasking.com, or contact your TASKING representative." Below this text box is a label "License Key:" followed by an empty text input field. At the bottom of the dialog box, there is a progress bar labeled "InstallShield" and three buttons: "Licensing Support", "< Back", and "Next >". A "Cancel" button is also present at the bottom right.

## TASKING License Management

3. In the **License Key** field enter the license key you have received from TASKING and click **Next** to continue.

*The installation program tries to retrieve the license information from a remote license server. Wait until the license information is retrieved. If the license information is retrieved successfully subsequent dialogs are already filled-in and you only have to confirm the contents of the dialogs by clicking the **Next** button. If the license information is not retrieved successfully you have to enter the information by hand.*

4. Select your **License Type** and click **Next** to continue. If the license type is already filled in and grayed out, you can just click **Next** to continue.

*You can find the license type in the email or paper that contains the license key.*

5. (For floating licenses only) Select **Remote license server** to use one of the remote license servers, or select **Local license server** for a local license server. The latter requires optional software.

(For local license server only) specify the **Server name** and **Server port** of the local license server.

6. Click **Next** and follow the rest of the instructions to complete the installation.

## Linux

1. If you want to use a local license server, first install and run the local license server before you continue with step 2. See [Section 3.2, Installing a Local License Server](#).
2. After installation of the TASKING product, the license options file `licopt.txt` is present in the directory `<install-dir>/TriCore/etc`. Edit this file with a text editor and change the line:

```
TSK_LICENSE_KEY_SW160800 = 0000-0000-0000-0000
```

Replace 0000-0000-0000-0000 with the license key you obtained from TASKING.

3. Set the environment variable `TSK_OPTIONS_FILE_<Product-Code><version>` to the absolute location of `licopt.txt`. For example, (assuming you have installed the TASKING product in `/opt`):

```
TSK_OPTIONS_FILE_SW160800v6_3r1 = /opt/TriCore/etc/licopt.txt
export TSK_OPTIONS_FILE_SW160800v6_3r1
```

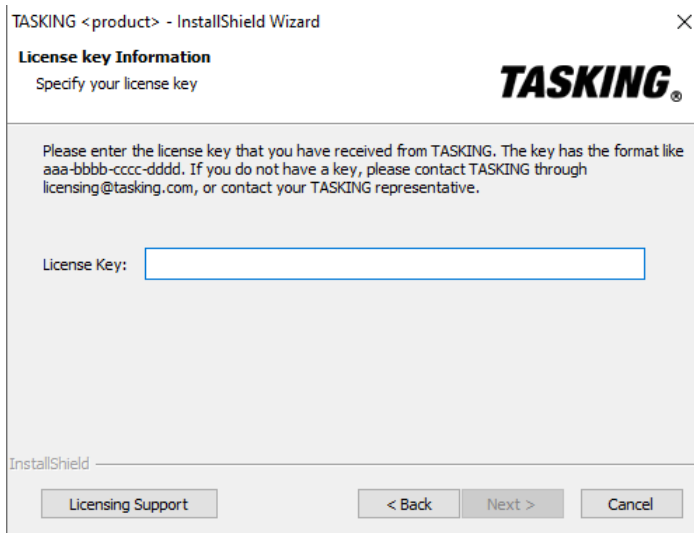
### 2.3.3. Installing Client Based Licenses (Node-Locked)

If you do not have received your license key and license file, read [Section 2.1, Obtaining a License](#) before continuing.

## Windows

1. Install the TASKING product and follow the instructions that appear on your screen.

*The installation program asks you to enter the license information.*



TASKING <product> - InstallShield Wizard

**License key Information**  
Specify your license key

**TASKING®**

Please enter the license key that you have received from TASKING. The key has the format like aaa-bbbb-cccc-dddd. If you do not have a key, please contact TASKING through licensing@tasking.com, or contact your TASKING representative.

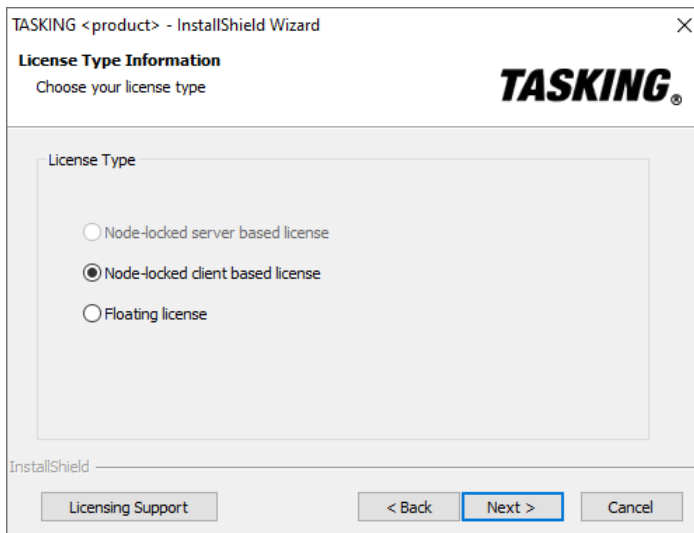
License Key:

InstallShield

Licensing Support < Back Next > Cancel

2. In the **License Key** field enter the license key you have received from TASKING and click **Next** to continue.

*The installation program tries to retrieve the license information from a remote license server. Wait until the license information is retrieved. If the license information is retrieved successfully subsequent dialogs are already filled-in and you only have to confirm the contents of the dialogs by clicking the **Next** button. If the license information is not retrieved successfully you have to enter the information by hand.*



TASKING <product> - InstallShield Wizard

**License Type Information**  
Choose your license type

**TASKING®**

License Type

☐ Node-locked server based license

☒ Node-locked client based license

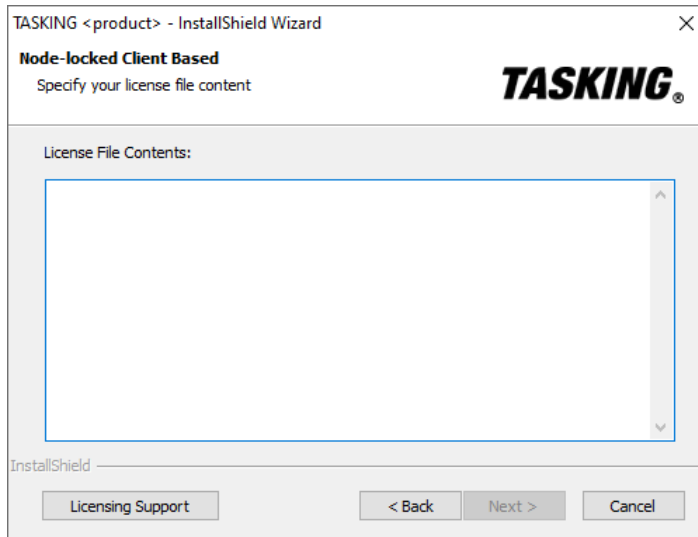
☐ Floating license

InstallShield

Licensing Support < Back Next > Cancel

3. Select **Node-locked client based license** and click **Next** to continue.

## TASKING License Management



4. In the **License File Contents** field enter the contents of the license file you have received from TASKING.

*The license data is stored in the file `licfile.txt` in the `etc` directory of the product (`<install_dir>\etc`).*

5. Click **Next** and follow the rest of the instructions to complete the installation.

## Linux

1. Install the TASKING product and put the license file `licfile.txt` you have received from TASKING in the directory `<install-dir>/TriCore/etc`. For example, if you installed the product in `/opt`, the path is `/opt/TriCore/etc`
2. After installation of the TASKING product, the license options file `licopt.txt` is present in the directory `<install-dir>/TriCore/etc`. Edit this file with a text editor:

- a. Change the line:

```
TSK_LICENSE_KEY_SW160800 = 0000-0000-0000-0000
```

Replace `0000-0000-0000-0000` with the license key you obtained from TASKING.

- b. Change the line:

```
#TSK_LICENSE_FILE_SW160800 = licfile.txt
```

to:

```
TSK_LICENSE_FILE_SW160800 = /opt/TriCore/etc/licfile.txt
```

Specify the absolute path to the file `licfile.txt`.



3. Set the environment variable `TSK_OPTIONS_FILE_<Product-Code><version>` to the absolute location of `licopt.txt`. For example:

```
TSK_OPTIONS_FILE_SW160800v6_3r1 = /opt/TriCore/etc/licopt.txt
export TSK_OPTIONS_FILE_SW160800v6_3r1
```

## 2.4. License Files Created During Installation

The installation program stores the license key in the file `licopt.txt` in the `etc` directory of the product. See [Section 2.4.1, Licensing Options File](#) for details about this file. Additionally, for a node-locked client base license only, the installation program stores the license data in the file `licfile.txt` in the `etc` directory of the product. See [Section 2.4.2, License File](#) for more information.

### 2.4.1. Licensing Options File

All information needed by the client program to perform the license check is read from the options file `licopt.txt` or from environment variables. The options in the options file have precedence over the environment variables.

The options file `licopt.txt` is searched for according to the following search path, relative to the installation directory of the product:

Windows:

```
..\etc;..\etc\tooldir\..\etc\tooldir\..\etc\tooldir\..\bin\tooldir
```

Linux:

```
../etc;../etc\tooldir/..\etc\tooldir/../etc\tooldir/../bin\tooldir
```

Alternatively, you can specify the name and location of the options file in an environment variable:

```
TSK_OPTIONS_FILE = file
```

or

```
TSK_OPTIONS_FILE_Product-Code = file
```

or

```
TSK_OPTIONS_FILE_Product-Code-version = file
```

For example:

```
TSK_OPTIONS_FILE = myoptions.txt
TSK_OPTIONS_FILE_SW160800v6_3r1 = sw160800-opt.txt
```

## TASKING License Management

The following options can be present in the license options file or as an environment variable:

Option / Environment Variable	Description	Mandatory / Optional
<code>TSK_LICENSE_KEY_Product-Code = License-key   PRODUCT</code>	Assign the license key <i>License-key</i> to the TASKING product with product code <i>Product-Code</i> . If the string <code>PRODUCT</code> is entered instead of a license key, then the client can retrieve an arbitrary license associated with the TASKING product identified by <i>Product-Code</i> from the license server. This functionality is, for example, used for joining licenses (see <a href="#">Section 4.3, Joining Licenses</a> ). You can find the <i>Product-Code</i> in the email or paper that contains the license key.	Mandatory
<code>TSK_LICENSE_SERVER = host [: port] [...]</code>	Specifies the list of license servers and associated port numbers that can be contacted by a client. A client tries to connect to a server in the order specified in the list. Only if a server is offline then a connection to another (backup) server is made. The server can be a remote license server or a local license server. The default is: lic1.tasking.com:8080; lic1.tasking.com:8936; lic1.tasking.com:80; lic2.tasking.com:8080; lic2.tasking.com:8936; lic2.tasking.com:80; lic3.tasking.com:8080; lic3.tasking.com:8936; lic3.tasking.com:80; lic4.tasking.com:8080; lic4.tasking.com:8936; lic4.tasking.com:80	Optional
<code>TSK_LICENSE_PORT = port</code>	Connect to port <i>port</i> on the license server. For the remote license server you can use port 8080, 8936 or port 80 (the remote license server listens on all three ports). If you use a local license server, specify 9090 or the port that you used during the installation of the local license server.	Optional
<code>TSK_LICENSE_PROXY_SERVER = proxyserver[:port]</code>	If a proxy server is required for outgoing license requests, use this option to specify <i>proxyserver</i> as the HTTP proxy server. If you omit the <i>port</i> , the default port is 3128.	Optional
<code>TSK_LICENSE_PROXY_PORT = port</code>	Specify the TCP port number to use for a proxy server (default: 3128).	Optional

Option / Environment Variable	Description	Mandatory / Optional
TSK_LICENSE_FILE = <i>file</i>  or  TSK_LICENSE_FILE_Product-Code = <i>file</i> (environment variable only)	If this option or environment variable is set, the client retrieves a license from the license file <i>file</i> instead of a remote server. Use this option when you use a node-locked client-based license. (default: <code>licfile.txt</code> ). The search path is the same as for the options file. Alternatively, you can specify an absolute path.  If you have several license files for different products you can use the product code in the environment variable name.	Optional
TSK_LOG_VERBOSE	Log verbose, repeat for more verbose. With this option log information about a license request by a client is sent to <code>stderr</code> . This option can be useful to see what is happening when problems arise during licensing.	Optional
TSK_NET_TIMEOUT = <i>sec</i>	Set the network timeout (default: 4 seconds). This specifies the number of seconds the system is allowed to wait for a connection.	Optional
TSK_NO_ANONYMOUS	Send user name and system name with the license request. This is useful for statistics and access information of the local license server. This option is necessary when you use an access file with a local license server. On Windows make sure the Windows environment variable <code>USERNAME</code> is set to the user name. See <a href="#">Section 4.5, Restricting Access to Licenses</a> .	Optional

### Speed up network connection

If you know that only TCP port 80, the last one in the list, is open for transparent access on your firewall, you can speed up the connection process by setting the following variable in the `licopt.txt` file:

```
# Connect to port 80
TSK_LICENSE_PORT = 80
```

or a full version:

```
TSK_LICENSE_SERVER=lic1.tasking.com:80;lic3.tasking.com:80
```

### Example of an options file

```
TSK_LICENSE_KEY_SW160800 = 1283-cc0a-5e67-8ae3
TSK_LICENSE_SERVER = lic1.tasking.com:8080;lic3.tasking.com:8080
TSK_LICENSE_PROXY_SERVER = proxy.mydomain.com
TSK_LICENSE_PROXY_PORT = 8081
```

## ***TASKING License Management***

```
TSK_LOG_VERBOSE
TSK_NET_TIMEOUT = 10
```

### **2.4.2. License File**

If you installed a node-locked client based license, a license file has been created on your computer (`licfile.txt`). This file contains the license of your product.

Example of a license file:

```
#
# TASKING License File
#
# Issue date: 2019-05-20 15:35:43
#
# License type: Node-locked client based license|Joinable
#
# Suitable for the computer with computer ID: 5Dzm-L9+Z-WFbO-aMkU-5Dzm-L9+Z-WFbO-aMkU-MDAy-Y2Zm
#
# License key: 1283-cc0a-5e67-8ae3
#
# Product code: SW16080005060000
#
SW16080005060000=71R4BfrOqSwOUF14DTfNsrm1uhHEbVNaM
O7B/BrtrRkIJ2KKsBYnnB2D216TIHtBB9EDGbyi0fDE2je6RmTv
JdlBiiQMFQ792pZT4fU7oArmAtSVx3e6XwyyaSzlVdV97Z81TJ
PS7Pe60V14wESjWGl8Q9G5yQfe4QKAzeWexkghdCBDD8RIdq+g
sgA==
```

# Chapter 3. Local License Server

## 3.1. Overview

Server based licenses can be serviced by either the TASKING remote license server or a local license server. The remote license server is accessed over the Internet whereas a local license server is accessed via your office network or your companies intranet.

A remote license server has the following advantages:

- Ease of use since you do not have to setup a local license server.
- TASKING can generate a license and license key without knowing the Computer ID in advance. So, you can install the package and run it without delay, without sending the Computer ID.
- You can easily update, upgrade (e.g. from Standard to Premium Edition), add extra seats and extend your license.
- The TASKING remote license server has an uptime of 99,9%, through four servers at two different locations.

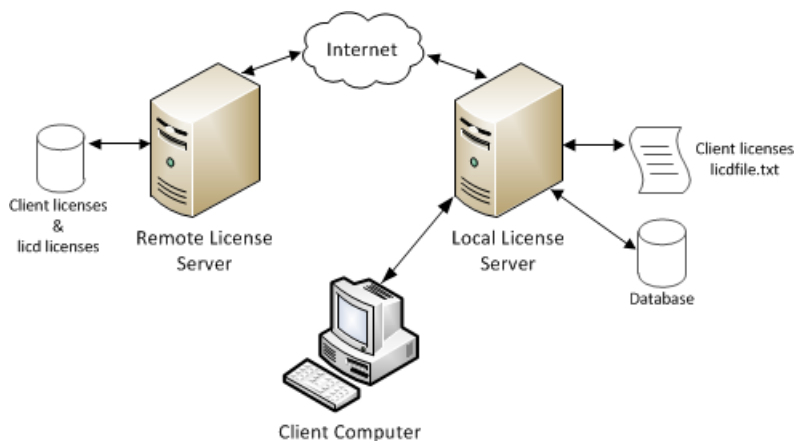
A local license server has the following advantages:

- Enables you to inspect license usage.
- Enables you to manage access to the license server and the licenses.
- Provides facilities for centralized bulk product distributions.
- Provides facilities for license management and transfer of licenses.
- Reduces internet traffic and associated delays.

The following restrictions apply to a local license server:

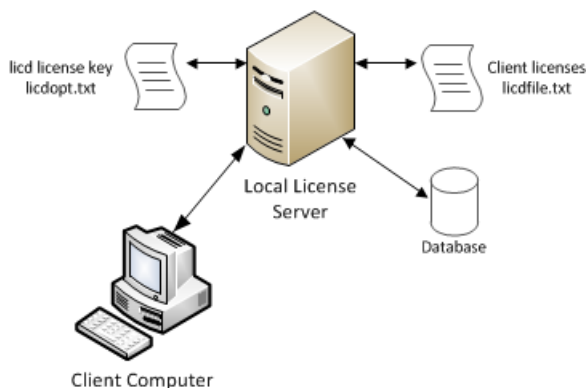
- By default the local license server will not execute on a virtual system. To use a local license server on a virtual system you need a special license. Also your virtual system must be configured to have a static CPU ID and a static MAC address.
- Windows 7 (64-bit), Windows 10 (64-bit) or Windows Server 2008R2 (64-bit) or higher.
- Linux (64-bit) distributions must support GLIBC version 2.11 or higher. You can check the version with the command `ldd --version`

### Solution 1: Local license server with internet access to remote license server



In this situation, the local license server licenses itself against a remote license server at first startup. This requires internet access. If internet access is unavailable or not permitted, use solution 2.

### Solution 2: Local license server without internet access



In this situation, the local license server licenses itself by reading its license data from a local key. This key must be obtained from TASKING support and added to `licdopt.txt`.

### Client licenses

The local license server can retrieve licenses from a license file (`licdfile.txt`) or can retrieve licenses from the remote license server, or a combination of the two, depending on the chosen solution. The license file is read at startup. If the license is not available in the license file, the local license server optionally retrieves the license from the remote license server. In this case the license is not available for the client on the remote license server anymore.

## Database

The local license server maintains all licenses and current license usage in a database. The licenses in the database are refreshed from the license file or from a remote server at certain intervals. When you modify the license file `licdfile.txt`, for example, to add a license, you do not need to restart the license server, since the license file is re-read automatically. When the local license server terminates, the current license usage is preserved in the database and is used again at startup. The database is locked to the security ID of the local license server's hardware. Therefore, you cannot move the database to another computer.

## 3.2. Installing a Local License Server

### Install the local license server

1. Download the TASKING License server from <https://www.tasking.com/support/tlm/downloads>.
2. For Windows follow these steps:
  1. Unpack the ZIP file and run the program **setup.exe**.  
*The TASKING Setup dialog box appears.*
  2. Click on the **Install** button.
  3. Follow the instructions that appear on your screen and **Finish** the installation.
3. For Linux follow these steps:
  1. Unpack the ZIP file in a temporary location.  
*A GNU zipped TAR file is now present (SW000089-vX.YrZ.tar.gz)*
  2. As root user unpack the `tar.gz` file in the directory where you want to install the local license server, e.g. `/opt`:  

```
tar xzvf SW000089-vX.YrZ.tar.gz -C /opt
```

  
where, `vX.YrZ` is the version number.  
*The directory `taskinglm` will now be created under `/opt`.*
4. Get the security ID of the computer on which you installed the local license server.
  - Open a command prompt (Windows) or a shell (Linux) in the `bin` directory of the installation directory of the TASKING license server, and enter the following command:

```
licd -I
```

For more information see [Section 3.2.3, Obtaining a License for a Local License Server](#).

## TASKING License Management

5. Send the security ID to TASKING by email: `licadmin@tasking.com`
6. You will receive an email in return with the license key to activate your local license server, attached as file `licdopt.txt`. Save this file into directory `C:\Tasking (Windows)` or `/opt/taskinglm/etc` (Linux). This file contains a line in the form:

```
LICD_KEY=abcdeFGHIjklmn1OPQrStuVwxY2ZgBtWZuKUIiKTrxB98rUPkNdxI6FDlSN  
jR8KLfVCnMM7Axr8fYRPzfDMw724xf93Jlq3gFw3jGGTYUCNC3gz4eZVnZw==
```

7. In a second mail, you will receive the 16-character license key that is used for installing the TASKING product on your clients (see [Section 2.3, Installing a License](#)). If you also have received license data for the TASKING product, store it in a file. For example: `licdfile.txt` and put it in the directory `C:\Tasking (Windows)` or the directory `etc` under the installation directory of the local license server (Linux), e.g. `/opt/taskinglm/etc`.

*On Windows, if the directory `C:\Tasking` does not exist already create the directory yourself. On Linux you need to create the `etc` directory yourself.*

8. Add the following line to the options file `licdopt.txt`:

Windows:

```
LICD_LICFILE = C:\Tasking\licdfile.txt
```

Linux (always use an absolute path):

```
LICD_LICFILE = /opt/taskinglm/etc/licdfile.txt
```

If the file `licdopt.txt` does not exist, create one and put it in the same directory as you stored the license file.

You can start the local license server as a service or from the command line.

### 3.2.1. Start the Local License Server as a Service

#### Install and start the local license server as a service (Windows only)

1. Open a command prompt as Administrator and install the local license server as a service:

```
licd --install
```

Note that without administrator rights, you cannot install a service. Note that you cannot specify other command line options, but you can set defines in `licdopt.txt`. When you start the local license server as a service, this file must be present in the directory `C:\Tasking`. See [Section 3.3, Local License Server Options and Defines](#) for a list of defines.

2. Open a command prompt as Administrator and start the local license server as a service:

```
sc start "TASKING License Service"
```

Note that without administrator rights, you cannot start a service.



## How to stop and delete the TASKING License Service (Windows only)

If you want to uninstall the local license server, you must first stop and delete the service.

- Open a command prompt as Administrator and stop and delete the local license server as a service:

```
sc stop "TASKING License Service"  
sc delete "TASKING License Service"
```

Note that without administrator rights, you cannot stop and delete a service.

## Install and start the local license server as a systemd service (Linux only)

1. Open a shell prompt and as root set up a systemd service to start it by creating the file `/etc/systemd/system/taskinglm.service` with the following contents (assuming the license manager is installed in `/opt/taskinglm`):

```
[Unit]  
Description=TASKING License Manager  
After=syslog.target network.target  
  
[Service]  
Type=forking  
ExecStart=/opt/taskinglm/bin/licd
```

2. Open a shell prompt and as root start the local license server as a service:

```
systemctl daemon-reload  
systemctl start taskinglm
```

## How to stop and remove the taskinglm service (Linux only)

If you want to uninstall the local license server, you must first stop and remove the service.

- Open a shell prompt and as root stop and remove the local license server as a service:

```
systemctl stop taskinglm  
systemctl disable taskinglm  
rm /etc/systemd/system/taskinglm.service  
systemctl daemon-reload  
systemctl reset-failed
```

### 3.2.2. Start the Local License Server from the Command Line

The preferred way is to start the local license server as a service, but when necessary, for example for debugging purposes or on Linux, you can start the local license server from the command line.

1. Windows only: Open a command prompt as Administrator.
2. Start the local license server:

```
licd [option]...
```

Instead of specifying options on the command line, you can set defines in `licdopt.txt`. This file must be present in the current working directory or in the `etc` or `bin` directory relative to the current working directory. See [Section 3.3, Local License Server Options and Defines](#) for a list of options and defines.

3. (Optional) When you get a security alert from a firewall, allow access to the network(s) that **licd** needs access to.

You can only run one instance of the license server on a system. If you start a second one, the first one stops. This will lead to unexpected results.

### 3.2.3. Obtaining a License for a Local License Server

A local license server is licensed with the security ID of the computer on which you installed the local license server. When the local license server starts it contacts the remote license server with its security ID to get its license, or if you received a license key in `licdopt.txt` it verifies its security ID against this key locally.

The security ID of a local license server is unique. You can obtain the security ID with the following command:

```
licd -I
```

If you install a new version of the local license server, this invalidates the database. However, the security ID is still the same, so the license of the local license server is still valid. After startup the local license server validates itself at the remote license server, or with the local license key, and retrieves the client data on demand from a license file or the remote license server and builds a new database.

### 3.3. Local License Server Options and Defines

You can set defines in the file `licdopt.txt` to control the local license server. The defines in `licdopt.txt` are read by the local license server when installed as a service or when started from the command line. If `licdopt.txt` is present, this file is always read.

When you start the local license server as a service, the file `licdopt.txt` must be present in the following path:

```
'\Tasking'
```

When you start the local license server from the command line, the file `licdopt.txt` is searched for in the following path:

Windows:

```
'..\etc;<licddir>\etc;<licddir>\..\bin'
```

Linux:

```
'../etc;<licddir>/../etc;<licddir>/../bin'
```

where `<licddir>` is the directory where **licd** is installed.

The option flags mentioned in the table below are available on the command line only. Command line options have precedence over defines from the options file. Note that you cannot use environment variables to set options for the local license server. The following options and defines are available:

Option	Define in <code>licdopt.txt</code>	Description
<b>-A</b> [ <i>access-file</i> ]	<code>LICD_ACCESSFILE [= file]</code>	Use an access file with access rules (default: <code>licdaccess.txt</code> ). See <a href="#">Section 4.5, Restricting Access to Licenses</a> .
<b>-f</b> [ <i>license-file</i> ]	<code>LICD_LICFILE [= file]</code>	Use a license file instead of a remote license server (default: <code>licdfile.txt</code> ). Search path: Windows: <code>'..\Tasking'</code> Linux: <code>'../etc;&lt;licddir&gt;/../etc;&lt;licddir&gt;/../bin'</code>
<b>-h</b> hostname[: port]	<code>LICD_REM_SERVER = host[: port]</code>	Use the remote license server for LicD validation and if requested, client licenses (default: <code>lic3.tasking.com:8080</code> ). Possible ports you can use are 8080, 8936 or 80.
<b>-I</b>		Show Security ID of the computer that executes the local license server.
<b>-L</b> [ <i>logfile</i> ]	<code>LICD_LOGFILE [= file]</code>	Log information in a file (default: <code>licd.log</code> ).
<b>-l</b>		Use the syslog (Linux only).
<b>-n</b>		Run LicD, but not as a daemon (Linux only).

## TASKING License Management

Option	Define in licdopt.txt	Description
<b>-Pport</b>	LICD_REM_SERVER_PORT = <i>port</i>	Connect to port <i>port</i> on the remote license server (default: 8080). Possible ports you can use are 8080, 8936 or 80.
<b>-pport</b>	LICD_LISTEN_PORT = <i>port</i>	Listen on port <i>port</i> for communication with clients (default: 9090).
<b>-Qport</b>	LICD_PROXY_PORT = <i>port</i>	Specify the TCP port number to use for a proxy server (default: 3128).
<b>-qproxyserver[:port]</b>	LICD_PROXY_SERVER = <i>proxyserver[:port]</i>	If a proxy server is required for outgoing license requests, use this option to specify <i>proxyserver</i> as the HTTP proxy server. If you omit the <i>port</i> , the default port is 3128.
<b>-Rnum</b>	LICD_AUTOREFRESH_TIMER = <i>num</i>	Auto-refresh timer. When the auto-refresh timer expires, the license server retrieves all licenses from either the license file (LICD_LICFILE) or from the remote license server. The number <i>num</i> specifies the refresh time in seconds. Valid values are between 60 and 14400 seconds (default: 600 seconds).
<b>-r</b>	LICD_USE_REMOTE	Use the remote license server to get client licenses in addition to a license file, or if no license file is present.
<b>-v</b>	LICD_LOG_VERBOSE	Verbose, repeat for more verbose.
	LICD_KEY = <i>key_data</i>	If network connectivity is unavailable, a local license server can read its license data from a local license key. This key must be obtained from TASKING support by providing the security ID with <code>licd -I</code> .
	LICD_MASTER = <i>host[:port]</i>	In a redundant master - slave configuration, use this option to specify the master server in the option file on the slave server. See <a href="#">Section 3.4, Redundant Master - Slave Configuration</a> .
	LICD_REFUSE_ANONYMOUS	Do not allow anonymous access to the local license server. This option forces that every client publishes his user name and system name with the client option <code>TSK_NO_ANONYMOUS</code> .
<b>--install</b>		Install the local license server as a Windows Service (Windows only).

Example of a local license server options file:

```
LICD_LICFILE = licdfile.txt
LICD_LOGFILE = mylog.log
LICD_ACCESSFILE = myveryspecialaccess.txt
LICD_LOG_VERBOSE
LICD_REM_SERVER=lic3.tasking.com:8080
LICD_LISTEN_PORT = 9090
```

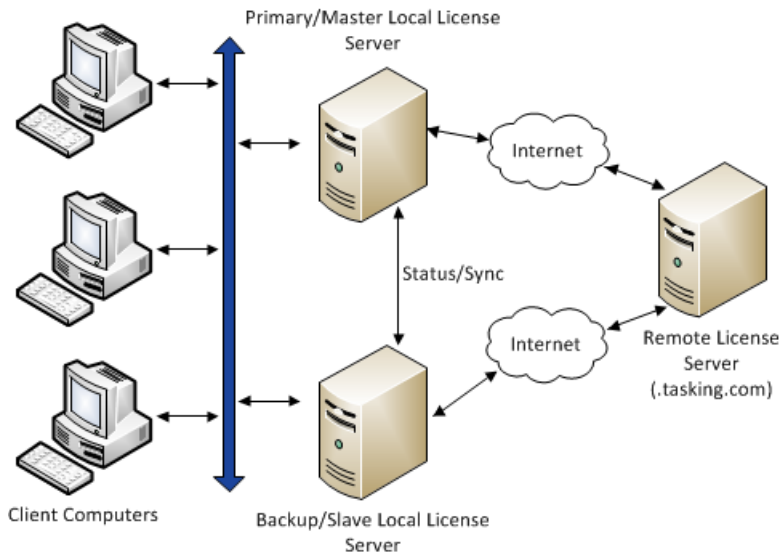
```
LICD_PROXY_SERVER = proxy.mydomain.com
LICD_PROXY_PORT = 8081
LICD_AUTOREFRESH_TIMER = 300
LICD_USE_REMOTE
```

### 3.4. Redundant Master - Slave Configuration

In a redundant server configuration there is a master local license server and a slave local license server. In normal operation mode the master server serves the licenses for the clients and the 'Sleeping Slave' server synchronizes its own database every minute with the master database. The slave server refuses to serve licenses.

If the master becomes unreachable, the slave server changes its operation mode to 'Active Slave'. It tries to get a time limited slave license from a TASKING remote license server and starts serving licenses with the last known master status. If the master server is back online again, the slave server changes its operation mode to 'Sleeping Slave' and starts the sync again with its master. The status of the slave server is not synchronized back with the master.

A slave server cannot read license files and cannot get license data from a TASKING remote license server except its own slave license. It can only get data from its master.



#### Client configuration

To use a redundant master - slave configuration, the client options file `licopt.txt` must contain both servers. For example,

```
TSK_LICENSE_SERVER = master.domain.com:9090;slave.domain.com:9090
```

## ***TASKING License Management***

If the master becomes unreachable a client switches to the next server in the list, the slave. If the master comes online again the slave refuses license requests. The client switches back to the first server in the list, the master.

A redundant local license server configuration needs two local license server licenses, one for the master and one for the slave (a time limited slave license).

The master and slave license servers must have the same version number and must run on the same operating system.

### **Slave server configuration**

The file `licdopt.txt` of a slave server must contain the following configuration item:

```
LICD_MASTER=hostname[:port]
```

For example:

```
LICD_MASTER=lic-master.domain.com:9090
```

## **3.5. Creating a Local License Server License File**

When you receive a license that must be serviced by a local license server then the email that you receive contains a license key and the license data. You have to copy the license data to the license file (default: `licdfile.txt`).

Example of a license email:

Dear user,

Please find below the license for the 07-200-160-808  
(TASKING VX-toolset for TriCore, Premium Edition) version 6.0.

The license key for your floating server license for 10 seats is:

```
e3e9-daef-dlc9-aa91
```

```
Software Product code : SW16080005060
License serial number : 12345678
Platform               : Windows
```

Serviced by the license server with Security ID: `hgtl-KvZ4-Q70W-qBoG`

Below you'll find details to get started:

#### **License Installation**

If you haven't done so already, please download your TASKING toolset [here](#).

Once downloaded, follow the steps in our [License Options Page](#) to install your software and license.

### Need Support?

- [Support Home](#) - Access documentation and downloads for your TASKING toolset.
- [Contact Us](#) - Get in touch with a TASKING support representative.

Best regards,

Your TASKING Team

- Copy the following data to your license file `licdfile.txt`, default in: `C:\Tasking`, on the system that will be running the license server -

```
SW16080005060000=4879pXXTSdt6WNMg5YDnkJvxLxFIP+Cqz
/aZB84oPIyFgJrIXymgVdlqM8odSKkFSL04Vdu7IissrsLVJGQ
yw6qDAPK3beos7Kc62UCICJ1SL3oCIFw7QT7CvD7tSNnV6Wsq0
9e380BHqOhtzVNxAjku8R+X7qLwqhttdZ2HhpRnOtN76WY1BT2
4BcDSQoen5N+A5QmY6BrqCrBKwNJpseOGRN5MiXLe+Ijk635md
V/9L0j/vufm0Uvc9XzQfPaTpxqoOR80Vhbo06UHKQ==
```

Note that when you have multiple license key entries in `licdfile.txt` you must separate the keys with at least one empty line, or comment line. For example:

```
SW16080005060000=4879pXXTSdt6WNMg5YDnkJvxLxFIP+Cqz
/aZB84oPIyFgJrIXymgVdlqM8odSKkFSL04Vdu7IissrsLVJGQ
yw6qDAPK3beos7Kc62UCICJ1SL3oCIFw7QT7CvD7tSNnV6Wsq0
9e380BHqOhtzVNxAjku8R+X7qLwqhttdZ2HhpRnOtN76WY1BT2
4BcDSQoen5N+A5QmY6BrqCrBKwNJpseOGRN5MiXLe+Ijk635md
V/9L0j/vufm0Uvc9XzQfPaTpxqoOR80Vhbo06UHKQ==
```

```
SW16080005050000=5wZBpxCwRRucQgRQNipXuSdptwSPgeZxb
twndcFx558BZtq9Ct4rCo/XxqqhDr200FrZYPjeg9T2NTOxYV+
xSCTejMVSS+9WUDFzu+JzGIBEIbZotvNiCL0118bBWr4vAovsp
8ZSi jdCNXZrCkj2xK5N1VqEDa21L3cJ71vHPhV9817znvA9ma
Qy8JvXw2fbOchGU1nEs6gLwtleoQ4gEmVMeoMmh0z14BqPR/Wc
gi6Wu0T9j9YU8S7WpHZjA1UFapL6etbkcmBWSMnRw==
```





# Chapter 4. Administering Licenses

## 4.1. Monitoring the Status of the Local License Server

### Browser

You can inspect the actual status and see the log information of the local license server with a browser. Use the following address:

```
http://lic_server_hostname:9090/stats
```

where, *lic\_server\_hostname* is the IP address or DNS name of the local license server.

The following columns are available:

Column	Description
License key	The license keys of the available licenses.
Product code	The product code.
Serial#	The serial number of the product.
Valid from	The date at which the license becomes valid.
Expires	The expiration date of the license, empty for perpetual licenses.
Modified	The date the license was modified.
Type	The type of license: Float (floating license), Node (node-locked license)
Seats	The number of seats for a floating license.
Seats in use	The number of licenses currently in use.

If you want to log the information in a file, you can use option **-L** of the local license server:

```
licd -L licd.log
```

### Command line

Instead of using a browser you can also use the tool **licdstat** to see the status and log information of a local license server.

```
licdstat [option]...
```

The following options are available:

- afile** append output to a file, mutual exclusive with **-f**
- ffile** write output to a file, mutual exclusive with **-a**
- hhost** host to query (default: localhost)
- key** query a specific key

## TASKING License Management

<b>-l</b>	list current license status
<b>-pport</b>	TCP port to use (default: 9090)
<b>-t</b>	display server status and version
<b>-u</b>	list current users
<b>-v</b>	verbose output
<b>-X</b>	generate X-Formation compatible output

Note that the user name and system name in the users lists of a license is only available if the option `TSK_NO_ANONYMOUS` is present in `licopt.txt` on the respective client computers. On Windows also make sure the Windows environment variable `USERNAME` is set to the user name.

Example:

```
licdstat -l -u -t
```

```
LicD: vx.yrz localhost:9090 Mon 20 May 2019 09:24:54 CET SecurityID: 3cHE-GME0-FW3I-sHTW
```

```
08f3-0d7b-9fe9-25de SW16080002 v5.0 (floating ser#:99224421 seats:10 inuse:10)
```

Firstname1 Lastname1/pc_a	(v4.9 2019-05-20 09:24:11)
Firstname2 Lastname2/pc_b	(v5.0 2019-05-20 09:24:11)
Firstname3 Lastname3/pc_c	(v4.1 2019-05-20 09:24:12)
Firstname4 Lastname4/pc_d	(v4.6 2019-05-20 09:24:12)
Firstname5 Lastname5/pc_e	(v4.9 2019-05-20 09:24:13)
Firstname6 Lastname6/pc_f	(v4.4 2019-05-20 09:24:13)
Firstname7 Lastname7/pc_g	(v4.4 2019-05-20 09:24:14)
Firstname8 Lastname8/pc_h	(v4.4 2019-05-20 09:24:14)
Firstname9 Lastname9/pc_i	(v4.1 2019-05-20 09:24:15)
Firstname10 Lastname10/pc_j	(v5.0 2019-05-20 09:24:15)

```
5854-61b9-4ecb-04f0 SW16080002 v6.0 (floating ser#:99015724 seats:3 inuse:3)
```

Firstname11 Lastname11/pc_h	(v4.4 2019-05-20 09:24:16)
Firstname12 Lastname12/pc_i	(v4.1 2019-05-20 09:24:16)
Firstname13 Lastname13/pc_j	(v6.0 2019-05-20 09:24:17)

You can use **licdstat** to generate output for the license statistics and management system X-Formation. The output is an XML status file which can be read by X-Formation. The following example is a Windows batch file that updates the license statistics for X-Formation:

```
:loop
  licdstat -h tlmserver.example.com -X -f c:\tlmlogs\tlm.xml
  timeout 60
  goto :loop
```

Instead of a batch file you can use the Windows Task Scheduler to call **licdstat** on a regular basis.

## 4.2. Transferring a License (Borrow Feature)

It is possible to move a floating license to a node-locked client based license temporarily. This is called 'borrowing'. You can use the tool **licborrow** to obtain a time restricted node-locked client based license on a client system from a local license server servicing a floating license for that client.

The license is retrieved by specifying the product code of the TASKING product. You can find the product code in the email or paper that contains the license key. The product code consists of the letters SW and the first 6 digits of the SW code, for example SW160800.

You can restrict access to which users and systems are allowed to borrow a license. A 0 days request returns the borrowed license to the TASKING server.

### To borrow a license (Windows, GUI)

1. From the **Start** menu, select **Programs » TASKING VX-toolset for target vx.yrz » Borrow License**.

*The Borrow a License dialog appears.*

2. From the **Borrow license for** list, select the product for which you want to borrow a license.
3. Enter the number of **Days** you want to borrow the license. One day literally means 24 hours.
4. Click **Borrow a License**.

### To borrow a license (Windows, command line)

On Windows a command line version is available also. You can download it from <https://www.tasking.com/support/tlm/downloads>. Enter the following command at a Windows command prompt:

```
licborrowcmd [option]... product-code version
```

The following options are available:

<b>-ddays</b>	number of days to borrow (0 .. 128), 0 returns a license
<b>-L</b>	extended list installed products
<b>-l</b>	list installed products
<b>-v</b>	verbose

### Examples

Show a list of installed products:

```
licborrowcmd -l
```

```
SW160800 v6.0r1 TASKING VX-toolset for TriCore
SW160800 v6.1r1 TASKING VX-toolset for TriCore
```

## ***TASKING License Management***

```
SW160800 v6.2r2 TASKING VX-toolset for TriCore  
SW160800 v6.3r1 TASKING VX-toolset for TriCore
```

Borrow a license for 7 days:

```
licborrowcmd -d7 SW160800 v6.1r1
```

Return a license:

```
licborrowcmd -d0 SW160800 v6.1r1
```

Show license details about the installed products:

```
licborrowcmd -L
```

```
SW160800 TASKING VX-toolset for TriCore v6.0r1. License for key license-key  
expired on this system at 2019-06-24 17:04  
SW160800 TASKING VX-toolset for TriCore v6.1r1. License for key license-key  
not yet borrowed  
SW160800 TASKING VX-toolset for TriCore v6.2r2. License for key license-key  
expires on this system at 2019-07-31 15:23  
SW160800 TASKING VX-toolset for TriCore v6.3r1. License for key license-key  
expires on this system at 2019-07-31 15:23
```

## **To borrow a license (Linux)**

On Linux PCs, enter the following command at a shell command prompt, assuming that the `bin` directory of the TASKING product is in the search path:

```
licborrow [option]... product-code version
```

The following options are available:

<b>-d</b> <i>days</i>	number of days to borrow (0 .. 128), 0 returns a license
<b>-v</b>	verbose

## **Example**

Borrow a license for 7 days:

```
licborrow -d7 SW160800 v6.1r1
```

Return a license:

```
licborrow -d0 SW160800 v6.1r1
```

## 4.3. Joining Licenses

You can bring together all licenses for one product into one overall license, this is called 'joining licenses'. Suppose you have placed two orders for a given product. In the first order you bought 5 floating licenses, in the second order you bought 10 additional floating licenses. With each order you have received a license key. You now have 15 floating licenses and 2 license keys. One key associated with 5 floating licenses, the other associated with 10 licenses.

If you run six instances of the product that use the license key obtained with the first order then one product instance will fail to execute due to the fact that there are only five licenses available. You do not want such behavior since you have bought 15 licenses. To solve this you can join licenses by updating the `licopt.txt` file by hand.

The following modification must be made in file `licopt.txt`: replace the license key by the string "PRODUCT".

For example:

```
# If you use a local license server you can
# implement a bulk installation by using the
# Product code as license key.
TSK_LICENSE_KEY_SW160800 = PRODUCT
```

When the product validates its license the license server resolves the license request by scanning through all of its licenses for the given product.

## 4.4. Bulk Installation

If you have to install a product on a large number of computers you may want to distribute one and the same instance of a TASKING product including the license files (`licopt.txt`) to all computers involved without having to execute the install program on each computer. This functionality is called "bulk installation".

### To facilitate a bulk installation

1. Install a TASKING product in the regular way as described in [Chapter 2, Licensing TASKING Products](#).
2. Join the licenses. Modify file `licopt.txt` as follows:

Replace the license key by the string "PRODUCT". For example:

```
# If you use a local license server you can
# implement a bulk installation by using the
# Product code as license key.
TSK_LICENSE_KEY_SW160800 = PRODUCT
```

3. Copy the installed product tree, including file `licopt.txt`, to all computers.

## TASKING License Management

- On all computers where you copied `licopt.txt` to in step 3, set the environment variable `TSK_OPTIONS_FILE_Product-Code-version` to the location of `licopt.txt`. For example:

```
TSK_OPTIONS_FILE_SW160800v6_1r1 = install-dir\licopt.txt
```

When the product validates its license the license server resolves the license request by scanning through all of its licenses for the given product.

## 4.5. Restricting Access to Licenses

With an access file (default: `licdaccess.txt`) you can deny, permit, block and bind users and systems to licenses. Without an access file no restrictions apply, every user, system or IP address is allowed access. See option **-A** in [Section 3.3, Local License Server Options and Defines](#).

By default, license requests are anonymous. To see which user name and system name are sent with a license request, you need to add the option `TSK_NO_ANONYMOUS` to your local `licopt.txt` file. See [Section 2.4.1, Licensing Options File](#). On Windows also make sure the Windows environment variable `USERNAME` is set to the user name.

The commands in an access file are processed from top to bottom. A subsequent command can overrule a previous command, as explained below and shown in the examples.

After a change in the access file the license server must be restarted.

The following commands are possible in an access file.

### deny

```
deny user { all | name }
deny system { all | name }
deny ip { all | ipaddr[-ipaddr] }
```

With this command the local license server denies access to the local license server for a user, a system, an IP address or a range of IP addresses. A `deny` command can overrule a previous `permit` command.

### permit

```
permit user { all | name }
permit system { all | name }
permit ip { all | ipaddr[-ipaddr] }
```

With this command the local license server permits access to the local license server for a user, a system, an IP address or a range of IP addresses. A `permit` command can overrule a previous `deny` command.

## block

```
block user { all | name } to key
block system { all | name } to key
block ip { all | ipaddr[-ipaddr] } to key
```

With this command the local license server blocks access to a specific license for a user, a system, an IP address or a range of IP addresses.

## bind

```
bind user { all | name } to key
bind system { all | name } to key
bind ip { all | ipaddr[-ipaddr] } to key
```

With this command the local license server allows access to a one specific license for a user, a system, an IP address or a range of IP addresses. A subsequent `bind` command can overrule a previous `bind` command. Note that a `bind` command cannot overrule a previous `block` command.

## borrow deny

```
borrow deny user { all | name } from { all | key }
borrow deny system { all | name } from { all | key }
borrow deny ip { all | ipaddr[-ipaddr] } from { all | key }
```

With this command the local license server denies a user, a system, an IP address or a range of IP addresses to borrow any license or a specific license. A `borrow deny` command can overrule a previous `borrow permit` command.

## borrow permit

```
borrow permit user { all | name } from { all | key } days n
borrow permit system { all | name } from { all | key } days n
borrow permit ip { all | ipaddr[-ipaddr] } from { all | key } days n
```

With this command the local license server permits a user, a system, an IP address or a range of IP addresses to borrow any license or a specific license for a maximum number of days. A `borrow permit` command can overrule a previous `borrow deny` command.

## Examples

To allow access to user `eric` only, enter:

```
deny user all
permit user eric
```

To specify that system `svr100a` is not allowed to access license key `aaaa-bbbb-cccc-dddd`, enter:

```
block system svr100a to aaaa-bbbb-cccc-dddd
```

## ***TASKING License Management***

To specify that all users are bound to license key xxxx-xxxx-yyyy-yyyy, except for users hans and martin and that they are bound to license key 1234-5678-9012-3456 and aaaa-bbbb-cccc-dddd respectively, enter:

```
bind user all to xxxx-xxxx-yyyy-yyyy
bind user hans to 1234-5678-9012-3456
bind user martin to aaaa-bbbb-cccc-dddd
```

To bind all users to the (product code) license 3de8-76aa-ed65-3271, except for two development departments:

```
bind ip all to 3de8-76aa-ed65-3271
bind ip 192.168.1.0-192.168.1.100 to 6a3c-cc42-1b40-a4ec
bind ip 192.168.1.101-192.168.1.200 to 11fa-5eca-7fee-1cd8
```

To allow an IP address range to borrow a license from 6a3c-cc42-1b40-a4ec for a maximum of three days, enter:

```
borrow deny ip all from all
borrow permit ip 192.168.1.0-192.168.1.100 from 6a3c-cc42-1b40-a4ec days 3
```