

```
{  
    FILE* sfile;  
    int count = 0;  
  
    sfile = fopen("f1");  
  
    if( sfile == NULL)  
    {  
        return -1;  
    }  
  
    while (1)  
    {  
        char c;  
        c = fgetc(  
        if(c == EOF  
        {  
            bre  
        }  
        else  
        {  
        }  
    }  
}  
  
return c
```

## Remote Evaluation Board Access Server Manual

A publication of  
Altium BV  
Documentation Department  
Copyright © 2000–2004 Altium BV

All rights reserved. Reproduction in whole or part is prohibited  
without the written consent of the copyright owner.

TASKING is a brand name of Altium Limited.

The following trademarks are acknowledged:

CrossView Pro is a trademark of Altium Limited.  
Windows is a registered trademark of Microsoft Corporation.

All other trademarks are property of their respective owners.

Data subject to alteration without notice.

<http://www.tasking.com>  
<http://www.altium.com>

*The information in this document has been carefully reviewed and is believed to be accurate and reliable. However, Altium assumes no liabilities for inaccuracies in this document. Furthermore, the delivery of this information does not convey to the recipient any license to use or copy the software or documentation, except as provided in an executed license agreement covering the software and documentation.*

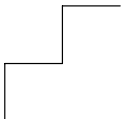
*Altium reserves the right to change specifications embodied in this document without prior notice.*

# CHAPTER

# 1

## SOFTWARE INSTALLATION

---



## **1.1 INSTALLATION**

This section described how to install the TASKING Remote Evaluation Board Access Server software on a Windows system.

1. Start Windows 95/98/XP/NT/2000, if you have not already done so.
2. Insert the CD-ROM into the CD-ROM drive.

*If the TASKING Showroom dialog box appears, proceed with Step 5.*

3. Click the **Start** button and select **Run...**
4. In the dialog box type **d:\setup** (substitute the correct drive letter for your CD-ROM drive) and click on the **OK** button.

*The TASKING Showroom dialog box appears.*

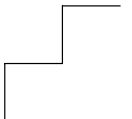
5. Select **TASKING Remote Evaluation Board Access Server** and click on the **Install** button.
6. Follow the instructions that appear on your screen.

# CHAPTER

# 2

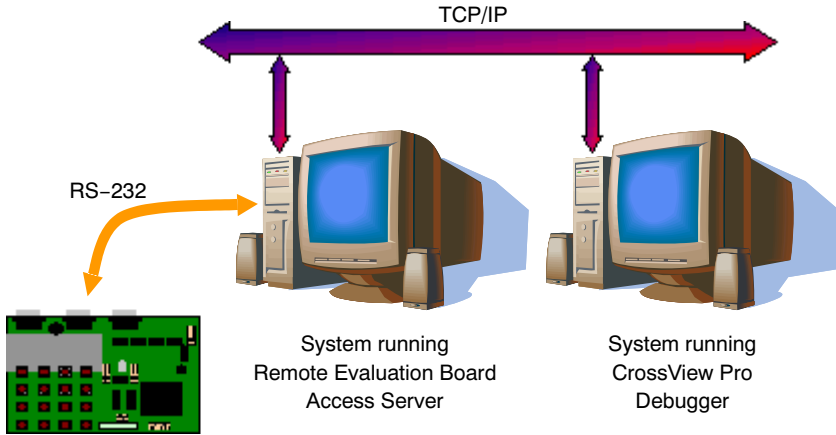
## CONFIGURATION

---



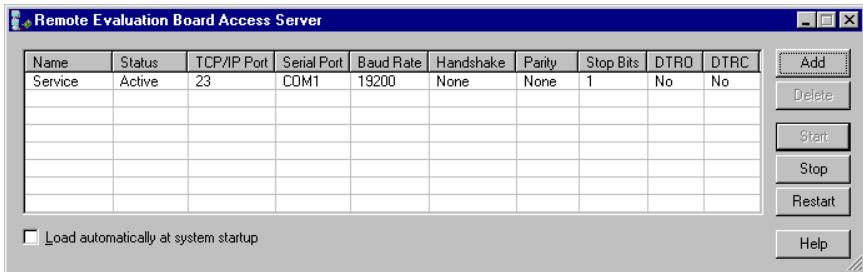
## 2.1 INTRODUCTION

The Remote Evaluation Board Access Server is a remote COM port driver, which allows you to share an evaluation board over the network. The CrossView Pro debugger can communicate via TCP/IP with the evaluation board that is connected to a COM port of another computer. The Remote Evaluation Board Access Server should be installed and executed on the computer that has the evaluation board connected to one of its COM ports.



## 2.2 ACTIVATING THE SERVER

When you start the Remote Evaluation Board Access Server for the first time you need to configure it.



### ***Adding a new service***

You can add one or more services. Each service is able to map one specific TCP/IP port to one COM port.

1. Click the **Add** button.

*A new service line appears.*

2. Before activating a service, it should be configured. Change one or more of the following fields.

- The **Name** field allows you to identify the service. This is especially useful when you have more than one evaluation board connected to your computer.
- The **Status** field shows the status of the service. As long as the service is running, it shows **Active**. If the service encounters a problem, this field shows an error message. You cannot edit this field.
- The **TCP/IP Port** field specifies the TCP/IP port the service will be listening on. You can either specify the TCP/IP port by number or by name. On the remote computer, CrossView Pro should be set up to use the same TCP/IP port.
- The **Serial Port** field specifies the COM port the evaluation board is connected to.
- The **Baud Rate**, **Handshake**, **Parity** and **Stop Bits** fields specify the properties of the specified serial port device.
- The **DTRO** and **DTRC** fields allow to hold DTR low for a short period when opening and/or closing the serial port device.

*All settings are saved in the file `remote-eva.ini` in the system's Windows directory.*

### ***Starting a service***

After a service is configured, it can be activated.

1. Select the service you want to activate.
2. Click the **Start** button.

### ***Restarting a service***

If you change any of the fields for an active service, you need to restart the service for the change(s) to take effect.

1. Select the service you want to restart.
2. Click the **Restart** button.

### ***Start automatically***

When you enable the **Load automatically at system startup** check box, the Remote Evaluation Board Access Server will be started automatically the next time the system is started.

## **2.3 CONFIGURING CROSSVIEW PRO**

To enable CrossView Pro to communicate with the Remote Evaluation Board Access Server, it must be configured to connect over TCP/IP.

### ***Configure CrossView Pro from EDE***

When you start CrossView Pro from EDE you can configure the communication from EDE.

1. From the **Project** menu, select **Project Options...**

*The Project Options dialog appears.*

2. Expand the **CrossView Pro** entry and select the appropriate **Communication** entry.
3. Select **TCP/IP** communication and fill in the host name where the Remote Evaluation Board Access Server runs and the TCP/IP port. The TCP/IP port must be the same as configured in the Remote Evaluation Board Access Server.

### ***Configure CrossView Pro from CrossView Pro***

When you start CrossView Pro without EDE you can configure the communication from CrossView Pro.

1. From the **Target** menu, select **Communication Setup...**

*The Communication Setup dialog appears.*

2. Select **TCP/IP** communication and fill in the host name where the Remote Evaluation Board Access Server runs and the TCP/IP port. The TCP/IP port must be the same as configured in the Remote Evaluation Board Access Server.



When you have the evaluation board connected to the same computer as where you want to run CrossView Pro, you can configure CrossView Pro as if connecting to a remote system or you can connect directly to the RS-232 port.